

# **Buyer's Guide**

## **The Spiratex Company**

*Custom Thermoplastic Extrusions*

*Roller Covers*

*Roller Sleeves*

*Aluminum Guide Rails*

*Conveyor Guide Rails*

*Wear Strips*

*Chuting*

*Spiral Slit Tubing*

*Spiral Covers*

*Flight Edging*

*Fabrication*



# Buyer's Guide



## The Spiratex Company

### Thermoplastic Extrusion

Founded in 1955, The Spiratex Company has pioneered many innovative plastics manufacturing techniques combining the latest extrusion technology, and an uncompromising commitment to quality. As a result, Spiratex has risen to become a leader in the custom thermoplastic extrusion industry.

Our knowledge and experience with a multitude of processing techniques affords us the ability to manufacture products from virtually any thermoplastic polymer. Our unique ability to extrude products using either ram or screw extrusion technology provides us unlimited flexibility, matched by no other manufacturer. Our diverse fabrication service makes us a complete one-stop supplier.

As your partner, Spiratex will respond quickly to your needs, creating a part that meets or exceeds all of your expectations. Our sales, engineering, and manufacturing staffs are ready to assist you during part design, material selection, and production. Finally, Spiratex maintains complete control over all facets of the product development and production processes, so we can guarantee your job is done right.

- **World Leader of Custom Extrusions**
- **A Single-Source Manufacturer with the Unique Capability of Both Screw and Ram Extrusion**
- **ISO Registered Since 1999**
- **Complete In-House Tool and Die Construction**
- **Custom Extrusions in a Wide Range of Engineering Resins and Custom Blends, Including Lubricated and Anti-Static**

- |                            |                 |                 |
|----------------------------|-----------------|-----------------|
| • Thermoplastic Elastomers | • Polyurethane  | • CAB           |
| • PVC – Rigid and Flexible | • Nylon         | • Polycarbonate |
| • ABS                      | • Polypropylene | • PVDF          |
| • Polyethylene             | • UHMW/PE       | • Custom Blends |

# Table of Contents

---

Designers Guide . . . . .	2
Spiral Slit Tubing . . . . .	3
Spiral Slit Tubing	
Standard Spiral Cover	
Roller Covers . . . . .	4-5
Spiratite Conveyor Roller Sleeves . . . . .	4
Conveyor Roller Sleeve Installation Tool . . . . .	4
Spira-Kote Conveyor Rollers . . . . .	5
ULTREX Conveyor Roller Sleeves . . . . .	5
Chuting and Tubing . . . . .	6
Chuting	
Fabrication Services . . . . .	6
ULTREX Materials Guide . . . . .	7
Abrasive Wear Loss Guide . . . . .	7
ULTREX Guide Rail . . . . .	8-9
Standard Insert Guide Rails 14 Gauge . . . . .	8
Spiratex Locking Insert Guide Rails 18 Gauge . . . . .	9
Aluminum Guide Rails . . . . .	10
ULTREX UHMW/PE Wear Covers . . . . .	10
Rail Assemblies . . . . .	10
Guide Rail Clips/Connectors . . . . .	11
Stainless Steel Guide Rail Connectors	
Plastic Compression Clip	
Two Piece Stainless Steel Rail Clip	
Rail Clips	
ULTREX Standard Wear Strips C Standards . . . . .	12-13
ULTREX Standard Wear Strips J Profiles . . . . .	14-15
ULTREX Standard Wear Strips and Extrusions	
Full and Half Rounds . . . . .	16
ULTREX Standard Wear Strips U Channel . . . . .	17
ULTREX Standard Wear Strips and Extrusions,	
Chain Tracks and Miscellaneous Profiles . . . . .	18
Rectangular Wear Strips . . . . .	19
Screw Conveyor Flight Edging . . . . .	20
Spiratex Custom Thermoplastic Extrusions . . . . .	21

# Designer's Guide

---

## **Spiratex Process and Tooling Capabilities**

Both our Conventional Screw Extrusion and Ram Extrusion Divisions utilize the latest CAD/CAM and Wire EDM systems to produce our profile tools.

Our manufacturing lines employ the latest technologies to allow us to process and/or fabricate finished, ready-to-use plastic extrusions bearing the highest quality in the industry.

A technical staff with over 50 years of experience working with custom extrusions is ready to help. Call, fax, or E-mail your ideas and/or questions today.

## **Design Tips and Cost Considerations**

Since the raw material cost is a significant portion of the final extruded cost, every effort should be made to reduce the cross-sectional area of the profile in keeping, of course, with dimensional limitations.

Tooling costs for custom extrusions are also dependant on the overall size of the part being extruded, and the complexity of the shape.

Tooling requiring suspended mandrels such as tubing will have a higher tooling cost. Sometimes, parts should be designed to connect hollow areas to the outside perimeter of the part.

Sectional extremes: Some warping can occur in the extrusion of any plastic, as it can with any metal. Most of this can be avoided if the profile has a degree of sectional symmetry. Circular, square, or rectangular profiles can be extruded straight without any particular fussing. If a profile has a large area at one side and a thin section on the other, it will tend to warp.

Profiles ram extruded with ULTREX<sup>®</sup> (UHMWPE) should have sectional thicknesses of better than 0.060" thick. Thicknesses can be thinner if profile is small and thickness is uniform. Wherever possible, avoid extra - thin sections of any significant width.

For Conventional screw extrusion profiles, a wall thickness minimum of 0.010" is preferred.

ULTREX<sup>®</sup> (UHMWPE) should be considered a wear cover or lining, not a structural member. To avoid indentations due to plastic creep of ULTREX<sup>®</sup> (UHMWPE) profiles, keep static compressive loading below 150 psi.

## **Fabrication**

Spiratex has complete fabrication capabilities, both on-line and off-line. We can cut, drill, or otherwise machine a part as requested by the customer. Printing, and the application of tape backings is also available

ULTREX<sup>®</sup> can also be machined to exacting specifications. Often parts that are extruded and then machined will mirror what would be injection molded with conventional materials.

## **Installation/Assembly**

In many applications, particularly wear-strips, many thermoplastics can be installed without any fasteners at all. The extrusion can be snapped in, snapped on, or snapped around. They can be slid on, in or over. Coupled with the tight extrusion tolerances that can be held, this will give the designer another potential opportunity for extra savings in both material and labor.

# Spirally Slit Tubing

## Spiral Slit Tubing

I.D. (A)	WALL (B)	SLIT (C)
0.250	0.035	0.375
0.375	0.035	0.375
0.500	0.050	0.625
0.625	0.050	0.625
0.750	0.050	0.875
0.875	0.050	0.875
1.000	0.050	1.125
1.125	0.075	1.125
1.250	0.075	1.375
1.375	0.075	1.375
1.500	0.075	1.625
1.625	0.075	1.625
1.750	0.075	1.875
1.875	0.075	1.875
2.000	0.075	2.125
2.125	0.075	2.125
2.250	0.075	2.375
2.375	0.075	2.375
2.500	0.075	2.625
2.625	0.100	2.625
2.750	0.100	2.875
2.875	0.100	2.875
3.000	0.100	3.125
3.125	0.100	3.125
3.250	0.100	3.375
3.375	0.100	3.375
3.500	0.100	3.500



Used to protect hoses in environments of high vibration, high heat, high impact, and for bundling or harnessing of hose and wire.

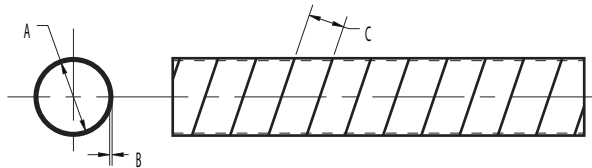
Any Size up to 3.5" ID

Nylon

- Materials Nylon 6, 6/6, 11 and 12
- High Temperature Applications
- Abrasion Resistant
- Available in a wide range of colors

Polyethylene

- High and Low Density
- Abrasion Resistant
- High Impact Strength
- Available in a wide range of colors



PART NUMBER	I.D.	WIDTH (W)
5097260	.250	.250
5097259	.375	.250
5097258	.438	.250
5097257	.500	.375
5097256	.625	.375
5097255	.750	.375
5097254	.875	.375
5097253	1.000	.625
5097252	1.188	.625
5097251	1.375	.625
5097250	1.625	.625
5834789	1.875	.625

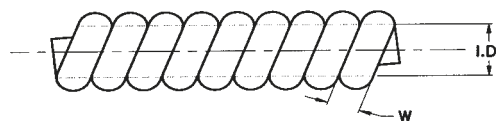
## Standard Spiral Cover

Used for bundling or harnessing of hose and wire.

Any Size/Dimension up to 1-7/8" ID

Cellulose Acetate Butyrate

- Available in Standard Sizes from 1/4" ID to 1-7/8" ID
- High Gloss Finish
- Standard color is black, other colors available upon request.



# Roller Covers

**Polyurethane**

## Spiratite Conveyor Roller Sleeves

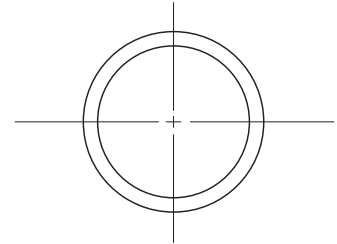
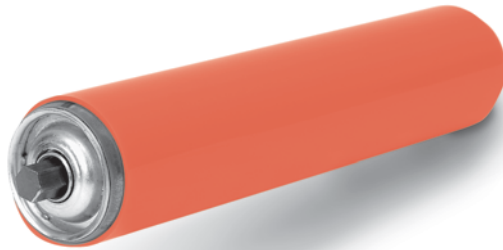
Interface Fit Roller Covers

Typical Uses include:

- Traction for inclines
- Food transfer lines
- Drops and Chutes
- Bumpers and Impact Zones
- Safety Covers for Stand-offs
- Antimicrobial

Colors Available

- Safety Orange (standard)
- Food Grade White
- Natural Clear
- Custom Colors Available



Custom sizes can be produced upon request.

### Standard .062 Wall Roller Cover

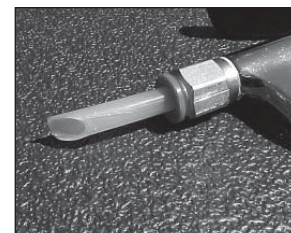
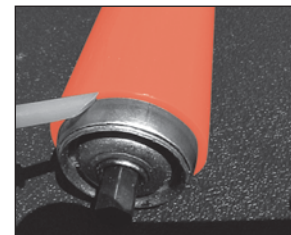
PART NUMBER	O.D. ROLLER	LENGTH
5026853	1.5000"	10'
5026885	1.6875"	10'
5026859	1.7500"	10'
5026854	1.9000"	10'
5037048	2.2500"	10'
5026858	2.0000"	10'
5026856	2.5000"	10'
5026857	2.7500"	10'
5026872	3.0000"	10'
5026873	3.3750"	10'
5026874	3.5000"	10'
5026875	3.7500"	10'
5026876	4.0000"	10'
5026877	4.3750"	10'
5026878	4.5000"	10'

### Heavy .125 Wall Roller Cover

PART NUMBER	O.D. ROLLER	LENGTH
5036993	1.3750"	10'
5026848	1.5000"	10'
5047116	1.7000"	10'
5026860	1.7500"	10'
5026849	1.9000"	10'
5026850	2.0000"	10'
5026936	2.2500"	10'
5026851	2.5000"	10'
5026852	2.7500"	10'
5026864	3.0000"	10'
5047097	3.1500"	10'
5026865	3.3750"	10'
5026866	3.5000"	10'
5026867	3.7500"	10'
5026868	4.0000"	10'
5026869	4.3750"	10'
5026870	4.5000"	10'
5026871	6.0000"	10'

## Conveyor Roller Sleeve Installation Tool

- Insert tubing at junction of roller and cover as shown allowing air to create a bearing plane.
- Gently push cover on/off, keeping the air pressure constant between both surfaces
- Cover will float on air cushion until stream is stopped or detached
- When correct position is achieved, remove nozzle and trim cover roller



# Roller Covers **Polyurethane**

## Spira-Kote Conveyor Rollers

The Spiratex Company is pleased to announce our newest product service: Coating your steel tubes with Thermoplastic Polyurethane (TPU). This process cures the TPU directly to your steel core, eliminating the need to send rollers out for additional coating treatments. We can co-extrude covers to lengths up to 20 feet long.

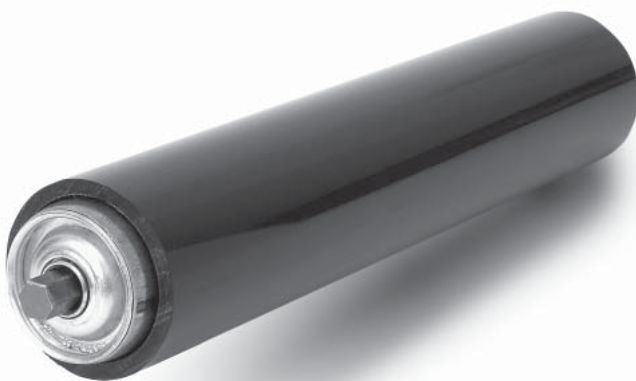
Our current capabilities are 1.9" and 2.5" diameter rollers in both 14 and 16 gauges.

- Cover is Co-Extruded onto your steel tubing
- 1/16" and 1/8" wall TPU cover
- 20 ft. sections for economical fabrications
- Custom Colors Available
- Standard Color is Safety Orange
- Custom Sizes Available



# Roller Covers **UHMW/PE**

## ULTREX Conveyor Roller Sleeves

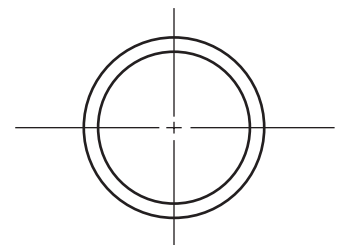


ULTREX clutch slip sleeves – with their superior surface finish – allow accumulation of product on power roller conveyors without damaging or marring conveyed products. In addition, the conveyor system is protected from over-taxing the drive components by relieving line pressure at bottlenecks and jams. These sleeves have set an industry standard for use with both powered and unpowered roller conveyors.

ULTREX conveyor roller sleeves are available to fit most roller sizes.

Standard color is black. Custom Colors available on request.

Part Number	Roller O.D.	ULTREX Sleeve I.D.	WALL	LENGTH
1972286	1.90"	2.000"	0.187"	Specify &10'
1982410	2.00"	2.250"	0.125"	Specify &10'
1012719	2.50"	2.625"	0.187"	Specify &10'



# Chuting and Tubing

## Chuting

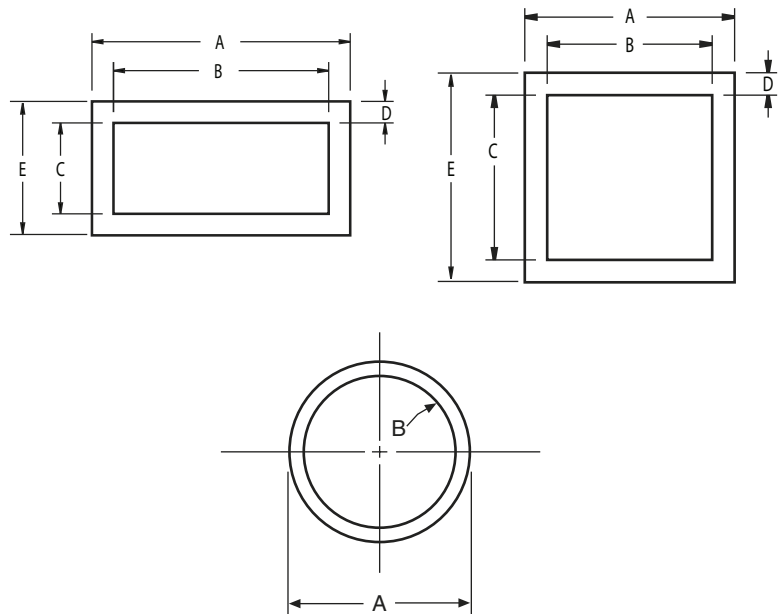
Spiratex Feed-Chuting is commonly used for feeding fasteners, washers and other parts to automated assembly equipment. Available in round, rectangular and square cross-sections, our experienced engineering department will work with you to guarantee proper product feed for your application.

### Materials

- UHMW/PE
- Polyurethane 60-95A durometer
- PVC Rigid and Flexible
- Nylon
  - Type 6
  - Type 6/6
  - Type 11
  - Type 12
- HDPE
- LDPE

Available in clear to view parts if required.

Custom sizes available. Call with your requirements.



## Fabrication Services

Spiratex provides prototype and production fabrication services. Often parts can be extruded and finished for much less than molding. In some cases, shapes are said to be un-moldable, before giving up call Spiratex. We have years of experience milling, drilling, punching and sawing thermoplastic resins allowing customers to receive completely finished components.



# ULTREX Materials **UHMW/PE**

**ULTREX®** is The Spiratex Company's registered trade name for Ram Extruded Ultra High Molecular Weight Polyethylene (UHMW/PE). All **ULTREX®** extrusions feature superior abrasion resistance, high impact strength, and a low coefficient of friction resulting in self-lubricating, non-stick surfaces.



#### **16000 ULTREX®**

Standard multipurpose UHMW/PE. Meets the FDA regulations for food handling applications.

#### **16303 ULTREX®**

UHMW/PE with a lubricant system designed for applications that require additional lubrication. Formulated with ingredients that meet FDA regulations for food handling applications. The standard color is gray.

#### **16020 ULTREX®**

Enhanced Conductivity UHMW/PE for applications which require static dissipation. The color is black.

#### **160XX ULTREX®**

ULTREX® extruded in special/custom colors.

#### **16050 ULTREX®**

Natural anti-static ULTREX® UHMW/PE.

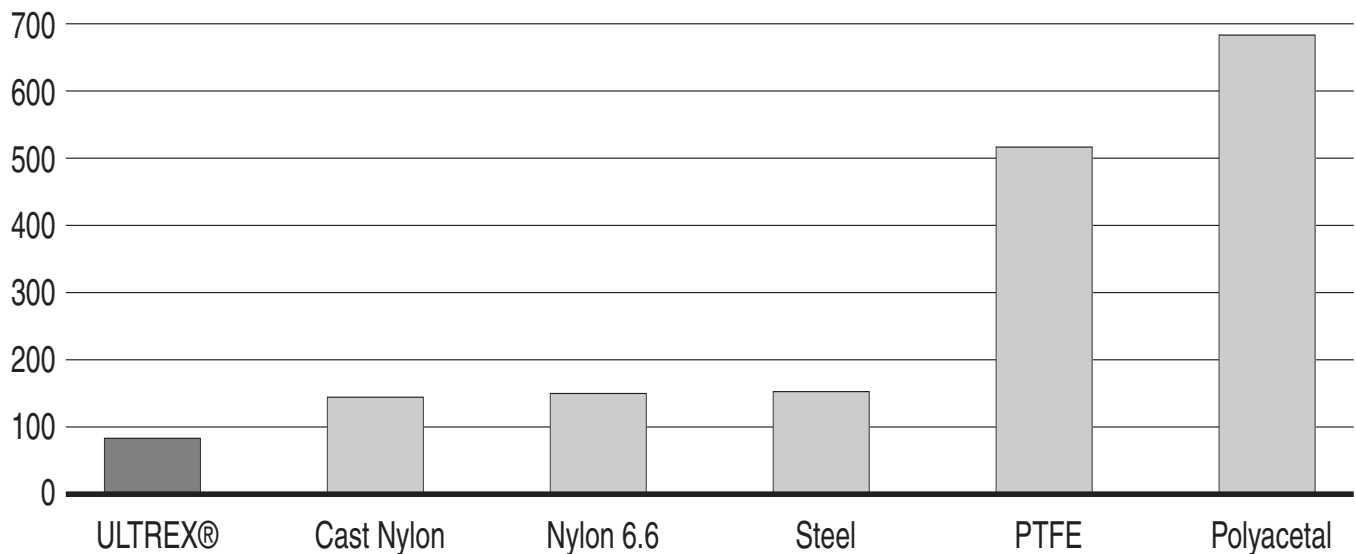
#### **16090 ULTREX®**

ULTREX® UHMW/PE with Molybdenum Disulfide.

#### **16324 ULTREX®**

Mechanical Grade Black UHMW/PE.

## Abrasive Wear Loss Comparison



# ULTREX<sup>®</sup> Rail

## UHMW/PE

### Standard Insert Guide Rails

Spiratex offers "solid" design guide rails standard. They have a superior surface finish and are manufactured using 304 stainless steel and USDA and FDA compliant ULTREX UHMW/PE. ULTREX inserts are produced exclusively using The Spiratex Company's ACU-RAM extrusion process. This proprietary extrusion process produces a surface finish far superior to that of common ram extruders. 14 gauge sheath allows for guide rails to be easily welded in place.

Natural material is standard

Also available:

Anti-Static

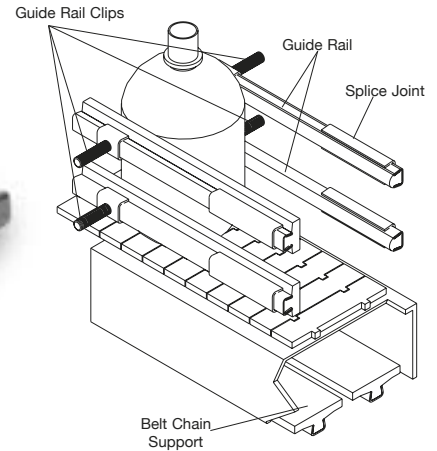
Lubricated

Anti-Microbial

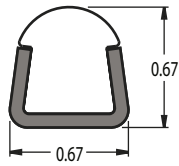
Custom Colors

10 ft and 20 ft. lengths in stock

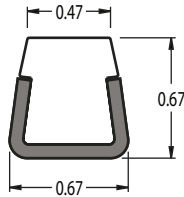
Custom lengths available.



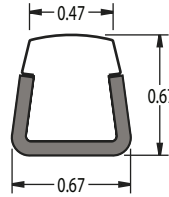
### Standard Solid RS-Series (14 Gauge)



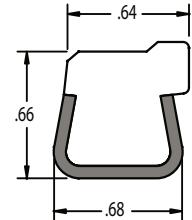
RS-000-067-R



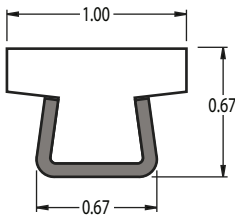
RS-046-067-F



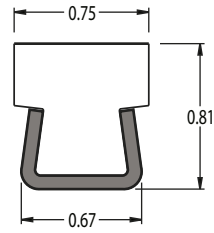
RS-046-067-M



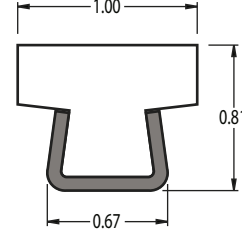
RS-0064-067-S



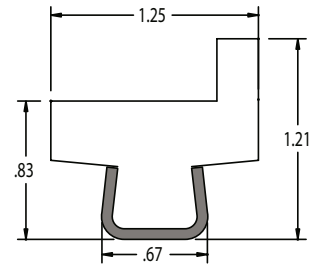
RS-100-067-F



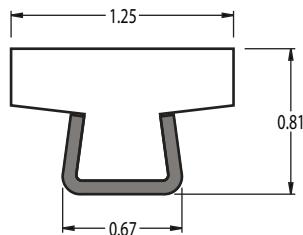
RS-075-081-F



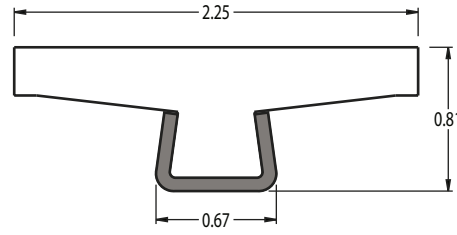
RS-100-081-F



RS-125-081-L



RS-125-081-F



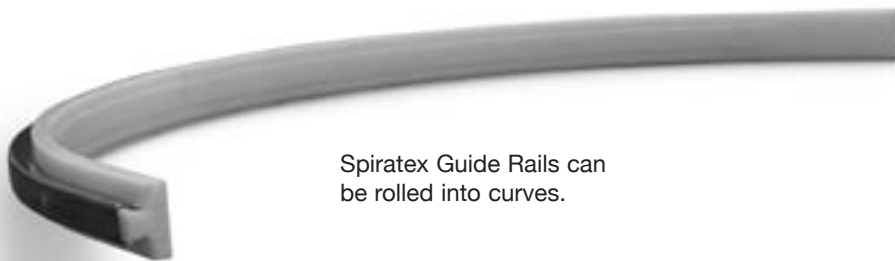
RS-225-081-F

# ULTREX<sup>®</sup> Rail

UHMW/PE

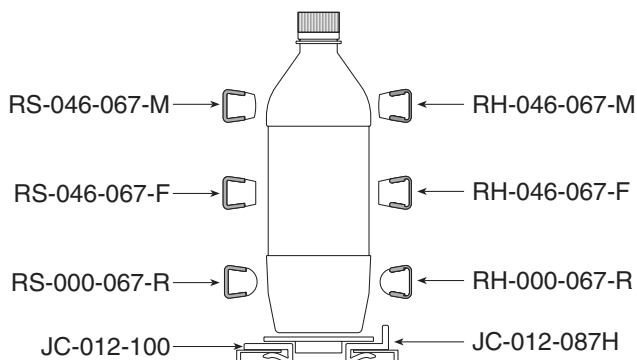
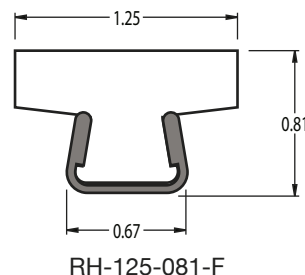
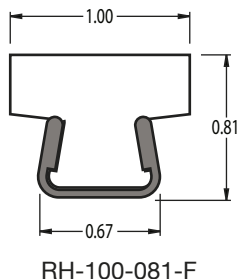
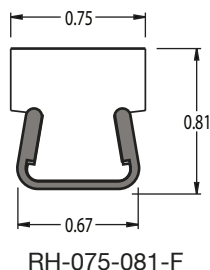
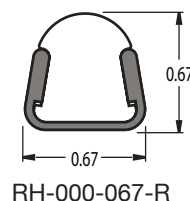
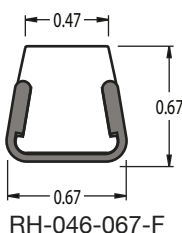
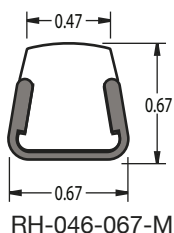
## Spiratex Locking Insert Guide Rails

### Spiratex New Solid RH-Series (18 Gauge)



Spiratex Guide Rails can be rolled into curves.

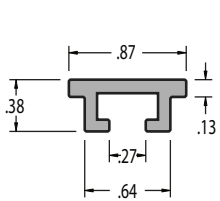
The new locking insert feature of the RH-Series guide rail helps prevent the insert from coming out. Additionally, the 304 stainless steel is reinforced where it is needed the most for more strength with less weight and cost.



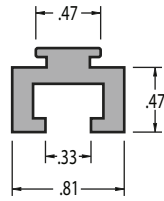
# Aluminum Guide Rails

**ULTREX®**

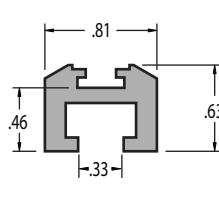
High quality rugged alloy aluminum rails are available separately or with the ULTREX wear surface preinstalled. Aluminum's light weight and structural support combined with ULTREX UHMW/PE's wear resistance and extremely low coefficient of friction, are an unbeatable combination.



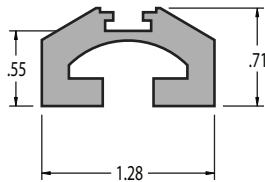
**AR-20**  
Fastens with  
1/4" Hex Head Bolt



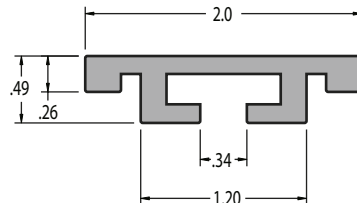
**AR-30**  
Fastens with  
5/16" Hex Head Bolt



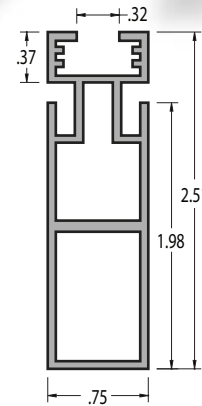
**AR-40**  
Fastens with  
5/16" Hex Head Bolt



**AR-50**  
Fastens with  
3/8" Carriage Bolt

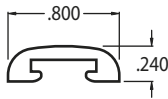


**AR-60**  
Fastens with  
5/16" Carriage Bolt

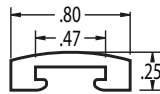


**AR-70**  
Fastens with  
5/16" Hex Head Bolt

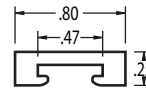
## ULTREX® UHMW/PE Wear Covers



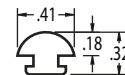
**WS-01**  
for AR-30 Rail



**WS-02**  
for AR-30 Rail



**WS-03**  
for AR-30 Rail



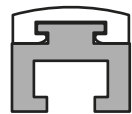
**2591**  
for AR-40, AR-50 Rail

## Rail Assemblies

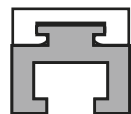
ULTREX® UHMW/PE



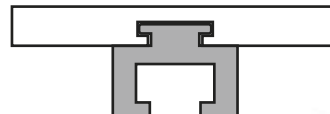
**AR-30/WS-01**  
Assembly  
Fastens with  
5/16" Hex Head



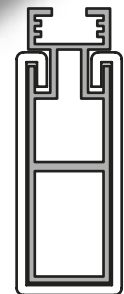
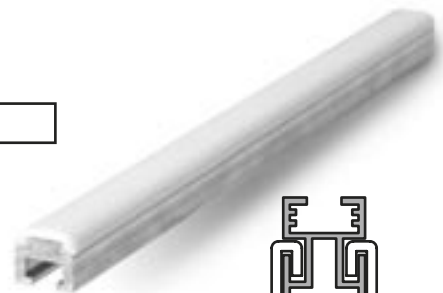
**AR-30/WS-02**  
Assembly  
Fastens with  
5/16" Hex Head



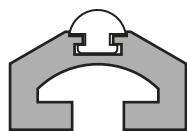
**AR-30/WS-03**  
Assembly  
Fastens with  
5/16" Hex Head



**AR-30/WS-06**  
Assembly  
Fastens with  
5/16" Hex Head



**AR-70/LD-10**  
Lane Divider Assembly  
Fastens with  
5/16" Hex Head Bolt



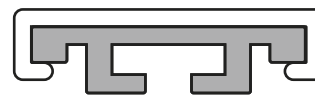
**AR-50/2591**  
Assembly  
Fastens with  
3/8" Carriage Bolt



**AR-40/2591**  
Assembly  
Fastens with  
5/16" Carriage Bolt



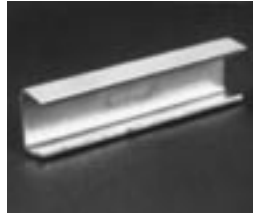
**AR-20/CC-012-087**  
Assembly  
Fastens with  
1/4" Hex Head



**AR-60/CC-025-200**  
or **AR-60/CB-025-200** Assembly  
Fastens with  
5/16" Carriage Bolt

# Accessories

## Guide Rail Clips/Connectors



### Stainless Steel Guide Rail Connectors

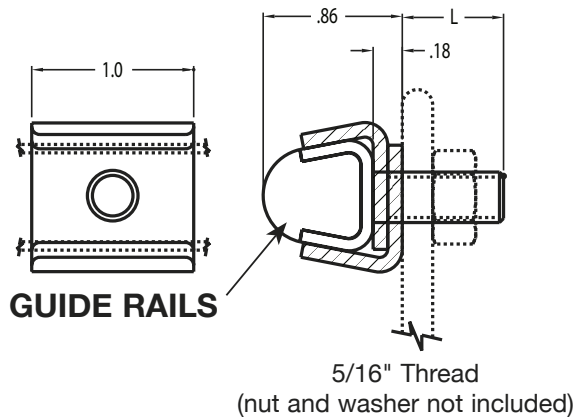
Part #SJ-200	2" Length
Part #SJ-300	3" Length
Part #SJ-400	4" Length
Part #SJ-600	6" Length



### Stainless Steel Guide Rail Connectors

Part #1043263

Tighten clip with stainless steel washer, nut and hex bolt.

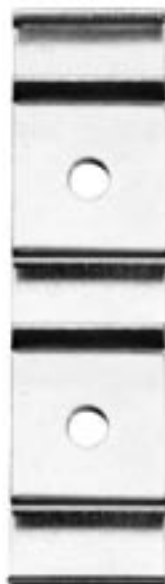


### Two Piece Stainless Steel Rail Clip

Materials: 13 ga. Stainless Steel

Part Number	Bolt Length (L)	Thread
1043265	5/8	5/16
1043266	3/4	5/16
1043267	1	5/16
1043268	1 1/4	5/16

### Rail Clamps



Triple Rail Clamp  
Part #1043271



Double Rail Clamp  
Part #1043270



Single Rail Clamp  
Part #1043269

## Standard Wear Strips and Extrusions

### C Standards

ULTREX UHMW/PE extrusions are produced exclusively using The Spiratex Company's ACU-RAM extrusion process. This proprietary extrusion process produces a surface finish far superior to that of common ram extruders.

Natural material is standard

Also available:

Anti-Static

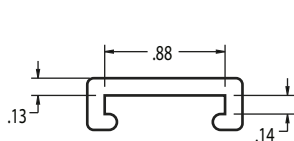
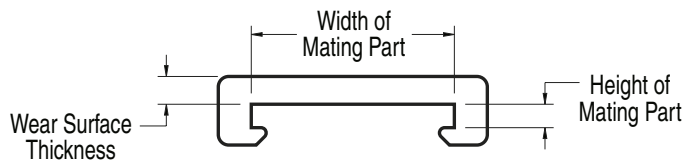
Lubricated

Anti-Microbial

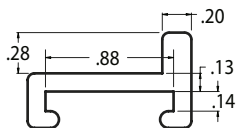
Custom Colors

10 ft and 20 ft. lengths in stock.

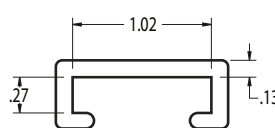
Custom lengths available.



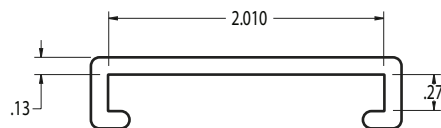
CC-012-087  
for AR-20  
Aluminum Rail  
(See page 10)



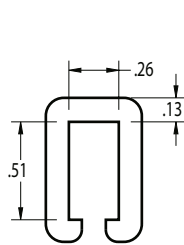
CC-012-087-F  
for AR-20  
Aluminum Rail  
(See page 10)



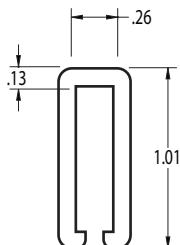
CC-025-100  
1/4" x 1" Bar



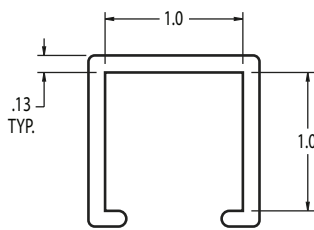
CC-025-200  
1/4" x 2" Bar  
or AR-60 Aluminum Rail  
(See page 10)



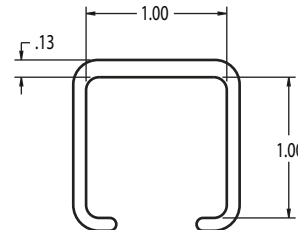
CC-050-025  
Fits 1/2" x 1/4" Bar



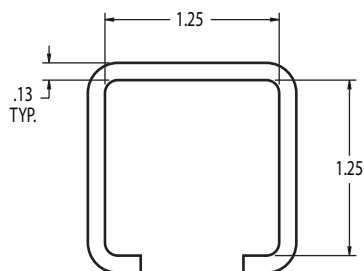
CC-100-025  
Fits 1" x 1/4" Bar



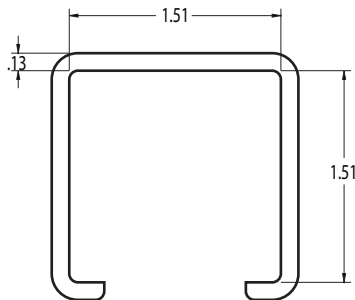
CC-100-100  
Fits 1" x 1" Bar



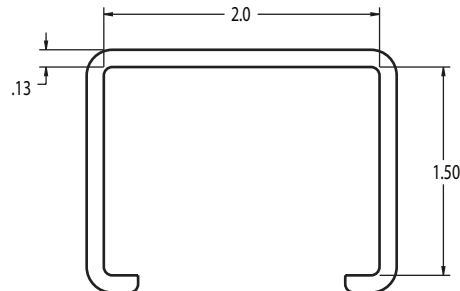
CB-100-100  
Fits 1" x 1" Bar



CC-125-125  
Fits 1-1/4" x 1-1/4" Bar



CC-150-150  
Fits 1-1/2" x 1-1/2" Bar



CC-150-200  
Fits 1-1/2" x 2" Bar

### Standard Wear Strips and Extrusions

### C Standards

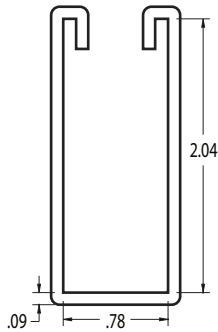


ULTREX UHMW/PE extrusions are produced exclusively using The Spiratex Company's ACU-RAM extrusion process. This proprietary extrusion process produces a surface finish far superior to that of common ram extruders.

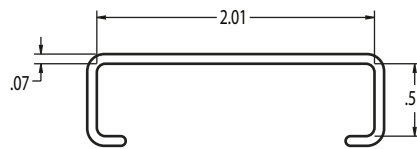
Natural material is standard

Also available:  
 Anti-Static  
 Lubricated  
 Anti-Microbial  
 Custom Colors

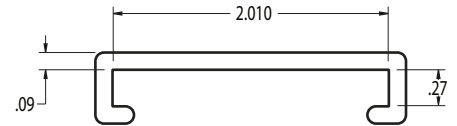
10 ft and 20 ft. lengths in stock.  
 Custom lengths available.



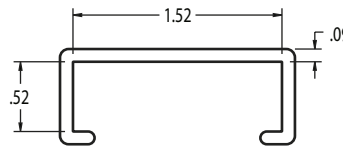
**LD-10**  
 Lane Divider Cover  
 For AR-70 Rail  
 (See page 10)



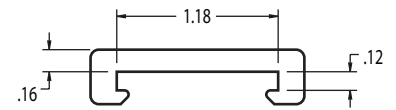
**CA-050-200**  
 1/2" x 2" Bar



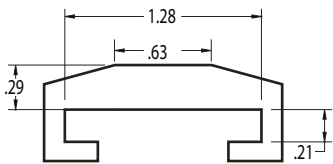
**CB-025-200**  
 1/4" x 2" Bar  
 For AR-60 Aluminum Rail  
 (See page 10)



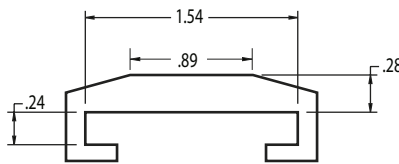
**CB-050-150**  
 Fits 1/2" x 1-1/2" Bar



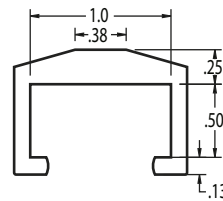
**CD-012-118**  
 Fits 1-1/8" x 1/8" Bar



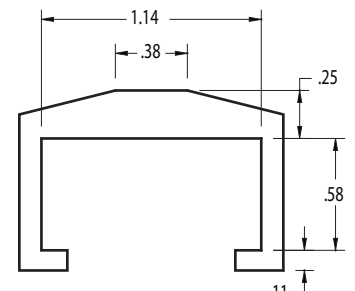
**PF-875**  
 Fits 1-1/4" x 3/16" Bar



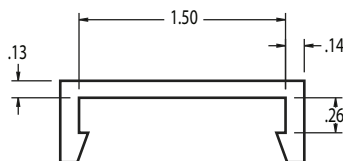
**PF-1156**  
 Fits 1-1/2" x 3/16" Bar



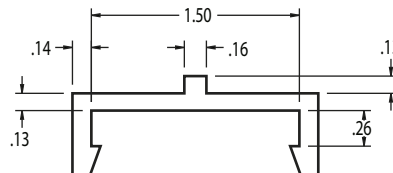
**PF-2722**  
 Fits 1/2" x 1" Bar



**PF-1845**  
 Fits 9/16" x 1-1/8" Bar



**PC-025-150**  
 Fits 1/4" x 1-1/2" Bar



**PC-025-150-C**  
 Fits 1/4" x 1-1/2" Bar

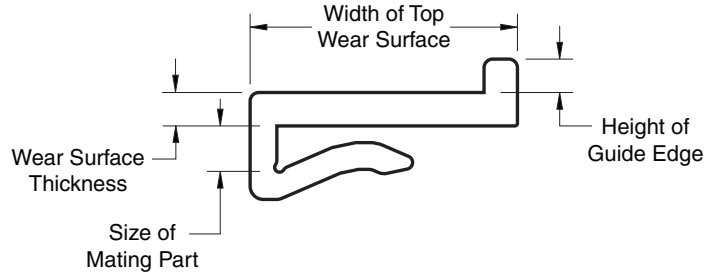
### Standard Wear Strips and Extrusions

#### J Profiles

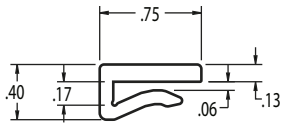
ULTREX UHMW/PE extrusions are produced exclusively using The Spiratex Company's ACU-RAM extrusion process. This proprietary extrusion process produces a surface finish far superior to that of common ram extruders.

Natural material is standard  
 Also available:  
 Anti-Static  
 Lubricated  
 Anti-Microbial  
 Custom Colors

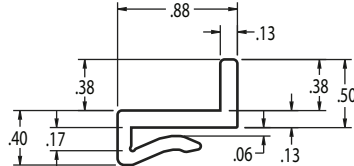
10 ft and 20 ft. lengths in stock  
 Custom lengths available.



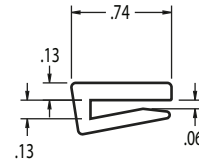
JC-Series profiles have a 1/8" wear surface and have been designed to fit 11 or 12 gauge sheet metal or 1/8" bar stock.



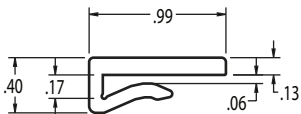
JC-012-075



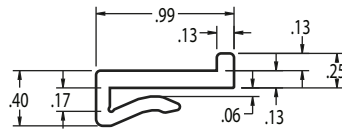
JC-012-087-H



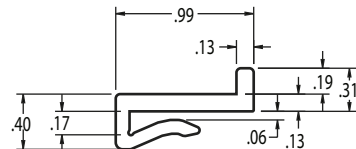
PC-2768



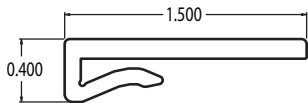
JC-012-100



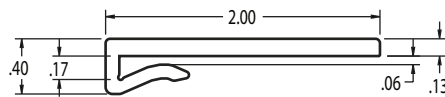
JC-012-100-C



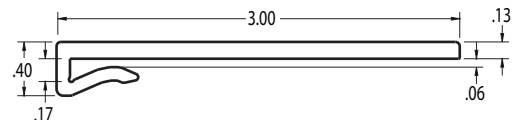
JC-012-100-E



JC-012-150



JC-012-200



JC-012-300

### Standard Wear Strips and Extrusions J Profiles

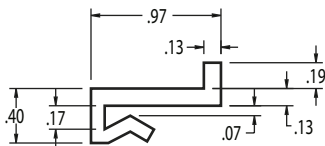


ULTREX UHMW/PE extrusions are produced exclusively using The Spiratex Company's ACU-RAM extrusion process. This proprietary extrusion process produces a surface finish far superior to that of common ram extruders.

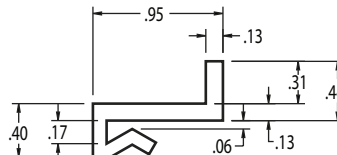
Natural material is standard  
Also available:  
Anti-Static  
Lubricated  
Anti-Microbial  
Custom Colors

10 ft and 20 ft. lengths in stock  
Custom lengths available.

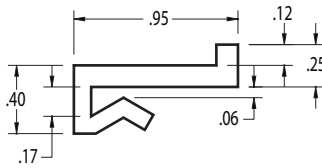
JC-Series profiles have a 1/8" wear surface and have been designed to fit 11 or 12 gauge sheet metal or 1/8" bar stock.



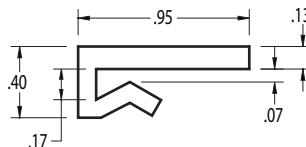
JC-012-095-E



JC-012-095-G

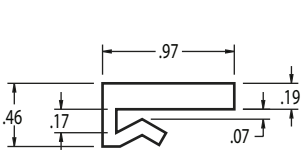


JC-012-095-C

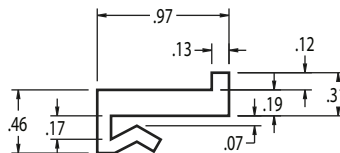


JC-012-095

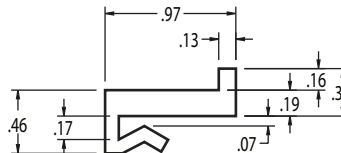
JE-Series profiles have a 3/16" wear surface and have been designed to fit 11 or 12 gauge sheet metal or 1/8" bar stock.



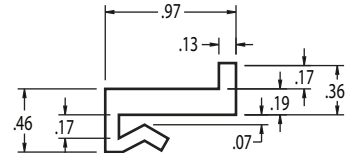
JE-012-095



JE-012-095-C

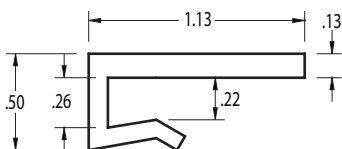


JE-012-095-D



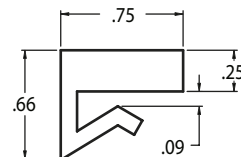
JE-012-095-E

JB-Series profiles have a 1/8" wear surface.  
Fit 1/4" bar.

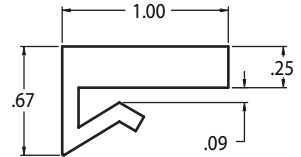


JB-025-112

JF-Series profiles have a 1/4" wear surface and have been designed to fit 3/16" bar stock.



JF-018-075

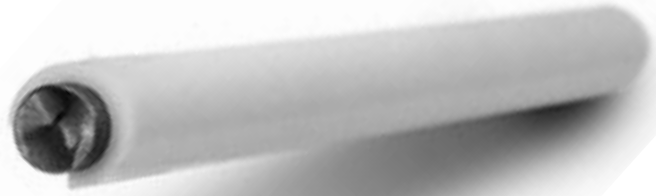


JF-018-100

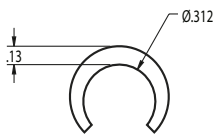
## Standard Wear Strips and Extrusions

ULTREX UHMW/PE extrusions are produced exclusively using The Spiratex Company's ACU-RAM extrusion process. This proprietary extrusion process produces a surface finish far superior to that of common ram extruders.

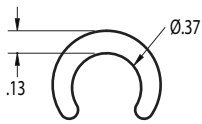
Materials Available:  
 Natural material is standard  
 Also available:  
 Anti-Static  
 Lubricated  
 Anti-Microbial  
 Custom Colors



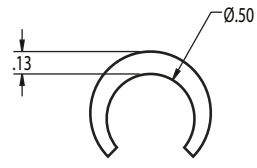
### Full Rounds



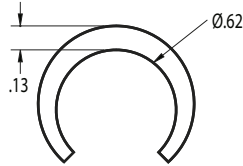
FR-0312  
for 5/16" Bar



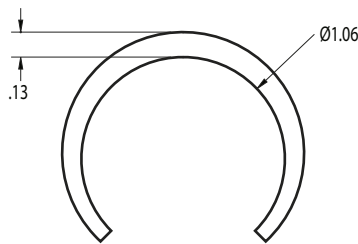
FR-0375  
for 3/8" Bar



FR-0500  
for 1/2" Bar

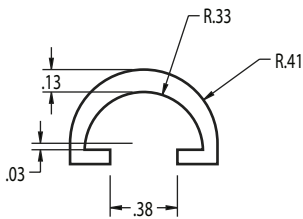


FR-1649  
for 5/8" Bar

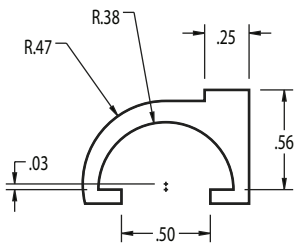


FR-1000  
for 1" Bar

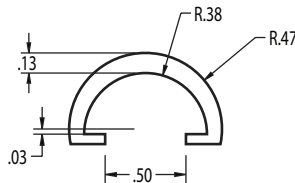
### Half Rounds



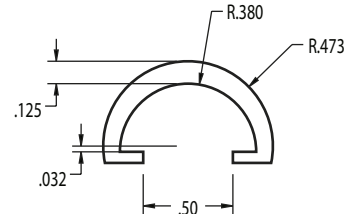
HR-0375  
for 5/8" Half Bar



HR-1224  
for 3/4" Half Bar

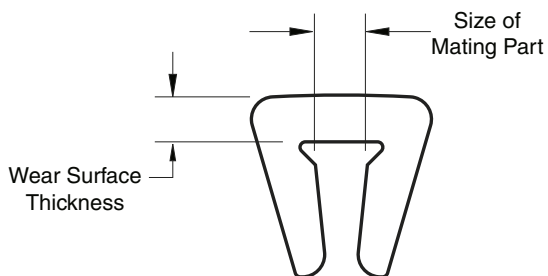


HR-0750  
for 3/4" Half Bar



HR-365  
for 3/4" Half Bar

### U Channel



ULTREX UHMW/PE extrusions are produced exclusively using The Spiratex Company's ACU-RAM extrusion process. This proprietary extrusion process produces a surface finish far superior to that of common ram extruders.

Natural material is standard

Also available:

Anti-Static

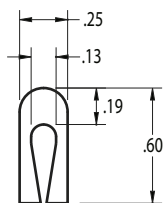
Lubricated

Anti-Microbial

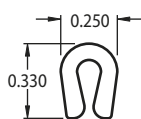
Custom Colors

250 and 500 foot coils in stock

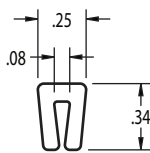
Custom lengths available



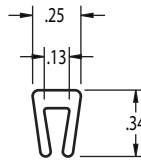
**UC-2898**  
for 1/16" Bar  
16 Gauge Hemmed



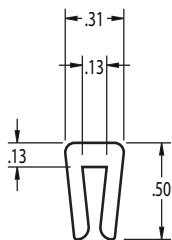
**PA-2753**  
for 3/32" Bar  
13 Gauge



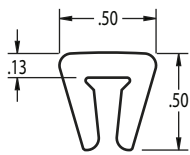
**UB-0062**  
for 1/16" Bar  
or 16 Gauge



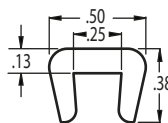
**UB-0125**  
for 1/8" Bar  
11 or 12 Gauge



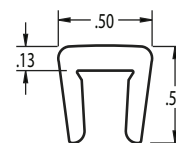
**UC-0125**  
for 1/8" Bar  
11 or 12 Gauge



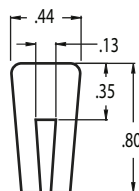
**UC-0188**  
for 3/16" Bar



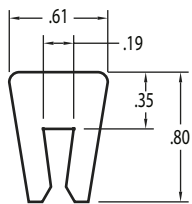
**UC-0250S**  
for 1/4" Bar



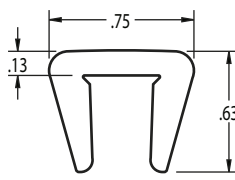
**UC-0250**  
for 1/4" Bar



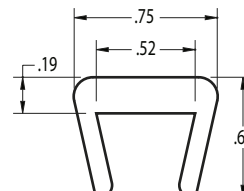
**UH-0125**  
For 1/8" Bar



**UH-0188**  
For 3/16" Bar



**UC-0375**  
for 3/8" Bar



**UE-0500**  
for 1/4" Bar

# ULTREX<sup>®</sup>

## UHMW/PE

### Standard Wear Strips and Extrusions Miscellaneous Profiles

Spiratex has a wide variety of profile shapes available. In addition to catalog offerings, we are capable of manufacturing many other custom shapes. Included are our unique curves. All ULTREX UHMW/PE extrusions are produced exclusively using The Spiratex Company's ACU-RAM extrusion process. This proprietary extrusion process produces a surface finish far superior to that of common ram extruders.

Natural material is standard

Also available:

Anti-Static

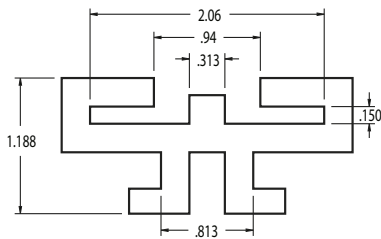
Lubricated

Anti-Microbial

Custom Colors

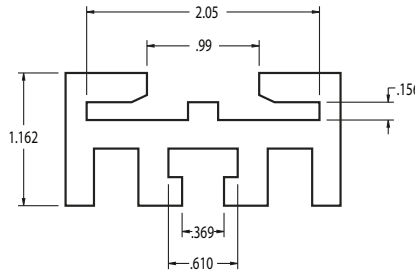


Available in  
Curve Sections



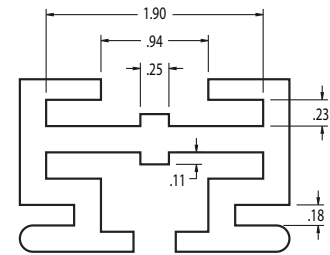
T-1147

#40 Chain Min. - #50 Chain Max.



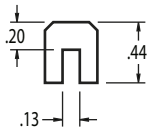
T-1206

#41 Chain Min. - #50 Chain Max.

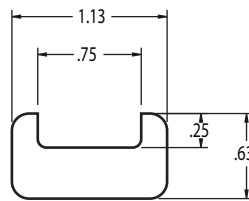


T-2189

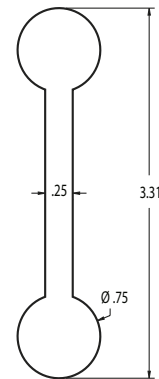
#41 Chain Min. - #50 Chain Max.



70-331

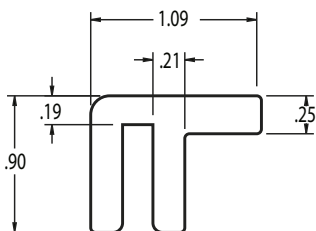


70-358



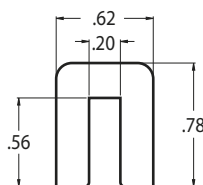
70-362

### Lubricated ULTREX UHMW/PE



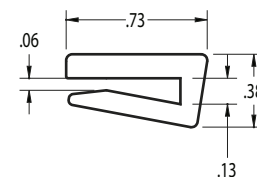
PE-2786

Fits 3/16" (.187) Bar  
with Chain Hold-Down Tab



PE-2869

Fits 3/16" (.187) Bar

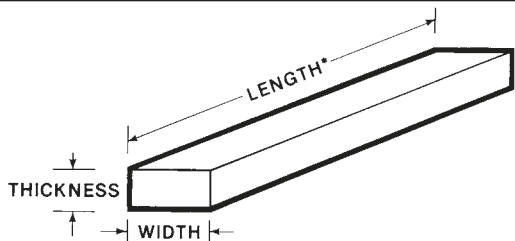


PC-2768

Fits 1/8" (.125) Bar

# Wear Strips

## Rectangular



Commonly furnished in 5 ft. and 10 ft. lengths. 20 ft. lengths available in some thicknesses. (Some sizes available in coils.)

Available in Self-Lubricating Hardwood and a variety of plastics, including:

- Virgin, Repro Black, and Green (UHMWPE),
- Food Grade Fluid Lube-Filled UHMWPE),
- TEFLONS (Hi-Temp) and
- Acetal (Delrin) – supplied in 4 ft. and 12 ft. lengths.

Available in other thicknesses, widths, lengths and colors.

THICK-NESS	WIDTH
3/16	1/2
	3/4
	1
	1 1/4
	1 1/2
	1 3/4
	2
1/4	3/8
	1/2
	5/8
	3/4
	7/8
	1
	1 1/4
	1 1/2
	1 3/4
	2
	2 1/4
	2 1/2
	2 3/4
	3
5/16	1/2
	5/8
	3/4
	7/8
	1
	1 1/4
	1 1/2
	1 3/4
	2
	2 1/4
	2 1/2
	2 3/4
	3
3/8	3/8
	1/2
	5/8
	3/4
	7/8
	1
	1 1/4
	1 1/2
	1 3/4
	2
	2 1/4
	2 1/2
	2 3/4
	3
7/16	1/2
	5/8
	3/4
	7/8
	1
	1 1/4
	1 1/2
	1 3/4
	2

THICK-NESS	WIDTH
7/16	2 1/4
	2 1/2
	2 3/4
	3
1/2	1/2
	5/8
	3/4
	7/8
	1
	1 1/4
	1 1/2
	1 3/4
	2
	2 1/4
	2 1/2
	2 3/4
	3
	3 1/4
	3 1/2
	3 3/4
	4
9/16	5/8
	3/4
	7/8
	1
	1 1/4
	1 1/2
	1 3/4
	2
	2 1/4
	2 1/2
	2 3/4
	3
5/8	5/8
	3/4
	7/8
	1
	1 1/4
	1 1/2
	1 3/4
	2
	2 1/4
	2 1/2
	2 3/4
	3
	3 1/4
	3 1/2
	3 3/4
	4
11/16	3/4
	7/8
	1
	1 1/4
	1 1/2
	1 3/4
	2
	2 1/4

THICK-NESS	WIDTH
1 1/16	2 1/2
	2 3/4
	3
3/4	3/4
	7/8
	1
	1 1/4
	1 3/8
	1 1/2
	1 5/8
	1 3/4
	1 7/8
	2
	2 1/4
	2 1/2
	2 3/4
	3
	3 1/4
	3 1/2
	3 3/4
	4
13/16	7/8
	1
	1 1/4
	1 1/2
	1 3/4
	2
	2 1/4
	2 1/2
	2 3/4
	3
7/8	7/8
	1
	1 1/4
	1 1/2
	1 3/4
	2
	2 1/4
	2 1/2
	2 3/4
	3
	3 1/4
	3 1/2
	3 3/4
	4
15/16	1
	1 1/4
	1 1/2
	1 3/4
	2
	2 1/4
	2 1/2
	2 3/4
	3
1	1

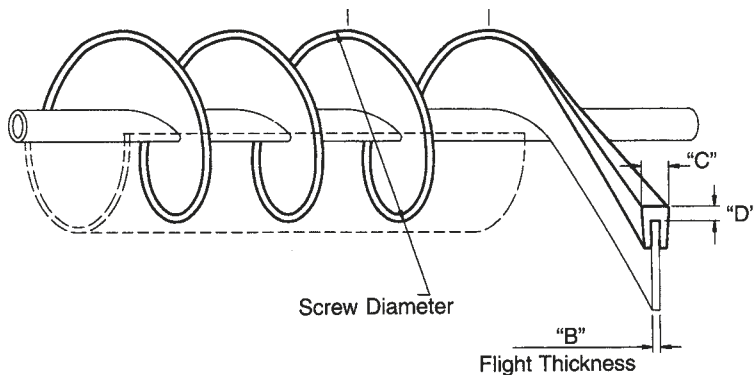
THICK-NESS	WIDTH
1	1 1/8
	1 1/4
	1 3/8
	1 1/2
	1 5/8
	1 3/4
	1 7/8
	2
	2 1/4
	2 1/2
	2 3/4
	3
	3 1/4
	3 1/2
	3 3/4
	4
1 1/8	1 1/4
	1 1/2
	1 3/4
	2
	2 1/4
	2 1/2
	2 3/4
	3
	3 1/4
	3 1/2
	3 3/4
	4
1 1/4	1 1/4
	1 1/2
	1 3/4
	2
	2 1/4
	2 1/2
	2 3/4
	3
	3 1/4
	3 1/2
	3 3/4
	4
1 3/8	1 1/2
	1 3/4
	2
	2 1/4
	2 1/2
	2 3/4
	3
1 1/2	1 1/2
	1 5/8
	1 3/4
	1 7/8
	2
	2 1/4
	2 1/2
	2 3/4
	3
	3 1/4
	3 1/2
	3 3/4
	4

\*PLEASE SPECIFY MATERIAL

# Screw Conveyor Flight Edging

## UHMW/PE

## Thermoplastic Extrusion



ULTREX UHMW/PE extrusions are produced exclusively using The Spiratex Company's ACU-RAM extrusion process. This proprietary extrusion process produces a surface finish far superior to that of common ram extruders.

- Natural (Standard)
- Anti-Static
- Lubricated
- Anti-Microbial
- Custom Colors Available

**Estimating the footage required to cover a screw section.**

### Standard Single/Full Pitch Screw

(The pitch is equal to the screw diameter)

Flight Edging Required (ft) = 3.4 X Length of Screw (ft)

### Half Pitch Screw

(The pitch is equal to half the screw diameter)

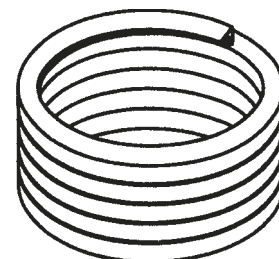
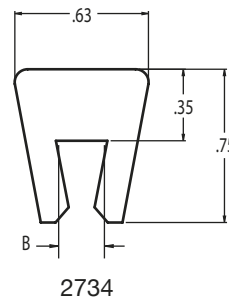
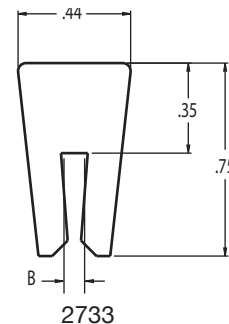
Flight Edging Required (ft) = 6.7 X Length of Screw (ft)

### Special Screw Configurations

Flight Edging Required (ft) = 0.283 X Screw Diameter (in) X Turns

PART NUMBER	"B"	MIN. O.D.	MAX. O.D.	AVG. COILS PER 100 FT.
2733-6-.06	.062	5.25"	6.0"	72.0
2733-6-.13	.134	5.25"	6.0"	72.0
2733-9-.10	.104	8.0"	9.0"	47.5
2733-9-.13	.134	8.0"	9.0"	47.5
2733-12-.13	.134	10.5"	11.5"	34.6
2733-14-.13	.134	12.0"	13.5"	30.0
2733-16-.13	.134	14.0"	15.5"	25.4
2733-16-.13	.134	16.0"	17.5"	23.0
2733-18-.13	.134	18.0"	19.5"	21.2

PART NUMBER	"B"	MIN. O.D.	MAX. O.D.	AVG. COILS PER 100 FT.
2734-6-.19	.187	5.25"	6.0"	72.0
2734-6-.25	.250	5.25"	6.0"	72.0
2734-6-.38	.375	5.25"	6.0"	72.0
2734-9-.19	.187	8.0"	9.0"	47.5
2734-9-.25	.250	8.0"	9.0"	47.5
2734-9-.38	.375	8.0"	9.0"	47.5
2734-12-.19	.187	10.5"	11.5"	34.6
2734-12-.25	.250	10.5"	11.5"	34.6
2734-12-.38	.375	10.5"	11.5"	34.6
2734-14-.19	.187	12.0"	13.5"	30.0
2734-14-.25	.250	12.0"	13.5"	30.0
2734-14-.38	.375	12.0"	13.5"	30.0
2734-16-.19	.187	14.0"	15.5"	25.4
2734-16-.25	.250	14.0"	15.5"	25.4
2734-16-.38	.375	14.0"	15.5"	25.4
2734-18-.25	.250	16.0"	17.5"	23.0
2734-18-.38	.375	16.0"	17.5"	23.0
2734-18-.19	.187	16.0"	17.5"	23.0
2734-20-.19	.187	17.5"	19.5"	21.0
2734-20-.25	.250	17.5"	19.5"	21.0
2734-20-.38	.375	17.5"	19.5"	21.0
2734-24-.25	.250	22.5"	24.75"	16.0
2734-24-.19	.187	22.5"	24.75"	16.0
2734-24-.38	.375	22.5"	24.75"	16.0
2734-31.5-.19	.187	28.5"	31.5"	13.0



# Spiratex

## *Custom Thermoplastic Extrusions*

Founded in 1955, The Spiratex Company has pioneered many innovative plastics manufacturing processes. Combining these techniques with the latest, cutting-edge extrusion technology, and an uncompromising quality mindset, Spiratex has risen to become a leader in the thermoplastic extrusion industry.

### ***Screw Extrusion***

---

The Spiratex Company offers a wide variety of screw extrusion possibilities. Everything from basic tubing to complex co-extruded profile shapes, we can offer a solution tailored to your specific requirements. You have the ability to vary material selection from standard grade resins, to specific engineering thermoplastic blends. This flexibility completely eliminates the potential of a one-polymer-fits-all material bias. Our twenty screw extrusion lines, range in size from 1.250" to 3.500" and operate around-the-clock affording us unlimited scheduling and process flexibility.



Whether your job is large or small, our attention to quality remains consistent, and is always our first priority. The more sophisticated your demands, the more you'll appreciate Spiratex.

### ***Ram Extrusion – UHMW***

---

The Spiratex Company's ram extruded UHMW P/E products have opened many doors to engineers and product designers. Spiratex was at the forefront of the ram extrusion industry with the development of ULTREX®, ultra-high molecular weight polyethylene (UHMW P/E), and we continue to lead by example to this day.



Our proprietary Acu-Ram extrusion process, which merges both die and extruder designs into a perfectly matched process, has been continuously improved for over 40 years. The result, a process that allows us to extrude unusually intricate shapes in thick or thin cross-sections. The unmatched surface finish of ULTREX® extruded product is so far superior to that of our competitors, allowing greater consistency and tighter tolerances, that we guarantee your satisfaction! Add our production capacity (in excess of 100 extrusion lines), our exceptional scheduling flexibility and turnaround time, and Spiratex becomes an easy choice. It's time to put our experience to work for you.

# *The Spiratex Company*

Romulus Facility  
6333 Cogswell Road  
Romulus, Michigan 48174  
734 722-0100  
734 722-1580 fax



ISO 9002/1994  
FM 65647

Monroe Facility  
1916 Frenchtown Center Drive  
Monroe, Michigan, 48162  
734 289-4800  
734 289-4804 fax



[www.spiratex.com](http://www.spiratex.com)

# *Spiratex*